

INSTALLATION INSTRUCTIONS

EZSPARK™ IGNITOR KIT 8263379, 8263380

8263379 Kit Components			
ITEM	P/N	DESCRIPTION	QTY
1	8071906	Ignitor Electrode Assembly	1
2	8069101	Ignitor Bracket	1
3	8090697	6-32 X ¼-inch Slot Head Screw	1
4	8090502	8-32 X ¾-inch Slot Head Screw	2
5	2601743	Push Button Ignitor Bracket	1
6	8076064	Ignitor, Battery Push Button	1
7	8090364	#8 X ⅝-inch Hex Head Screw	2
8	W1C654	Ground Wire	1
9	8076083	Battery, AAA 1.5V	1
10	1080442	Cover, Assy, Pilot, Piezo Ig 2X	1
11	8197398	Installation Instructions	1
12	8023458	Label, Battery Replacement	1

8263380 Kit Components		
P/N	DESCRIPTION	QTY
2601743	Push Button Ignitor Bracket	1
8076064	Ignitor, Battery Push Button	1
8090364	#8 X ⅝-inch Hex Head Screw	2
W1C654	Ground Wire	1
8076083	Battery, AAA 1.5V	1
8197398	Installation Instructions	1
8023458	Label, Battery Replacement	1

1. If the fryer is equipped with a burner heat shield, remove the heat shield hanger screws at the front of the main burner and remove the heat shield.
2. Disconnect the pilot gas tube from the pilot. Remove the two mounting screws from the pilot assembly and remove it from the burner assembly.
3. Attach the ignitor electrode assembly (Item 1) (See Figure 1) to the ignitor bracket (Item 2) using the 6-32 X ¼ -inch screw (Item 3) furnished with the kit, and then attach the ignitor bracket to the pilot assembly using the two 8-32 X ¾-inch screws (Item 4) furnished with the kit.
4. Remount the pilot assembly to the burner assembly using the screws removed in Step 2 and reconnect the pilot gas tube.
5. If necessary attach item 10, new pilot cover assembly over the pilot access hole.
6. Position the push button ignitor bracket (Item 5) on the cabinet door frame as shown (see Figure 4 and 6) and, using it as a template, mark and drill two holes for mounting the push button ignitor bracket.
7. Insert the ignitor body (Item 6) into the push button ignitor bracket as shown (see Figure 2) and secure it with the large nut. Insert the battery into the ignitor with the positive (+) end

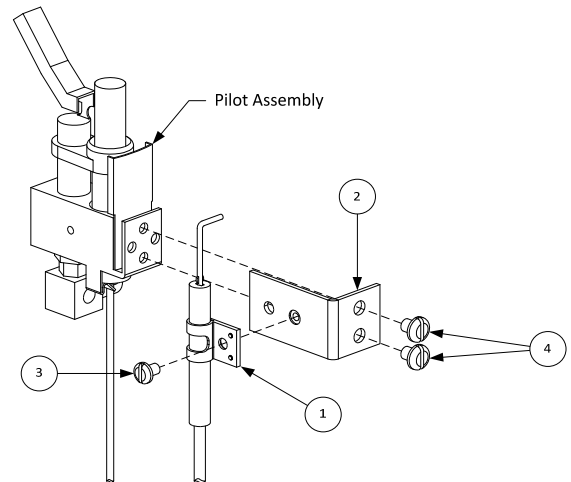


Figure 1

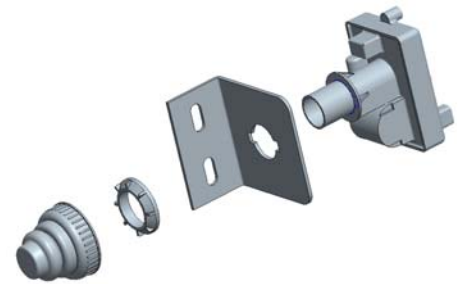


Figure 2

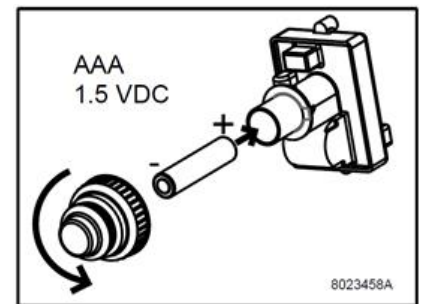


Figure 3





Figure 4

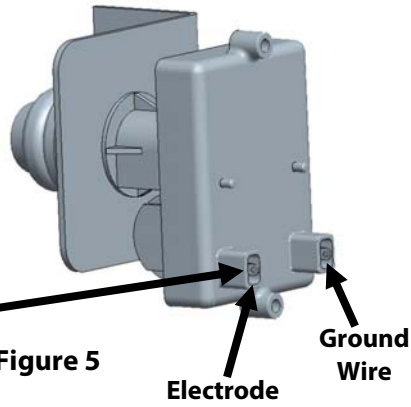


Figure 5

towards the rear of the fryer and the negative (-) end towards the cap (see Figure 3) and secure with the push cap.

8. Attach the push button ignitor assembly to the cabinet (See Figure 6) using the two #8 X 5/8-inch screws (Item 7) furnished

with the kit and connect the electrode lead to left connection of the ignitor (see Figures 4 and 5). Connect the included ground wire (Item 8) (see Figures 4 and 5) to the right connection of the ignitor as shown and install under lower screw as shown (see Figure 4).

9. If the fryer is so equipped, reinstall the burner heat shield using the screws removed in Step 1.
10. Attach the label 8023458 to the cabinet door to the left of the ignitor (see Figure 6).

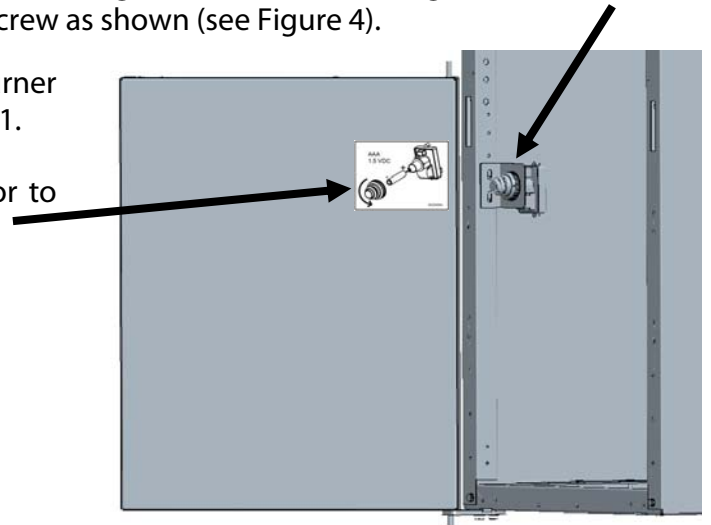


Figure 6